

# PHILIPS

LCD monitor with  
USB-C

Business Monitor

4000 series

27" (68.5 cm)

2560 x 1440 (QHD)

27B2U4601



## Redefining workflow productivity

This monitor brings all the essentials to the table and more. With a stunning Quad HD resolution, IPS panel, and USB-C connectivity, pictures stay vibrant while the connection provides high-speed data transfer.

### Designed for the way you work

- Built-in stereo speakers for multimedia
- SmartErgoBase enables people-friendly ergonomic adjustments
- Smart Link Sync: for uniform daisy-chained displays
- Eyesafe certified blue light protection and color accuracy
- Less eye fatigue with Flicker-free technology
- EasyRead mode for a paper-like reading experience
- SoftBlue Technology: for comfortable viewing

### Single cable USB-C connection

- RJ-45 to USB-C gives easy network connection with security
- USB 3.2 high speed data transfer

### Superb Picture Quality

- 120Hz refresh rates for ultra-smooth images
- IPS LED wide view technology for image and color accuracy
- Crystalclear images with Quad HD 2560 x 1440 pixels

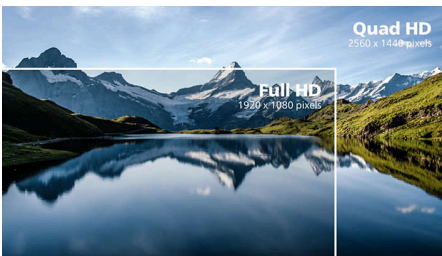
## Highlights

### IPS technology



IPS displays use an advanced technology which gives you extra wide viewing angles of 178/178 degree, making it possible to view the display from almost any angle. Unlike standard TN panels, IPS displays gives you remarkably crisp images with vivid colors, making it ideal not only for Photos, movies and web browsing, but also for professional applications which demand color accuracy and consistent brightness at all times.

### Crystalclear images



These Philips screens deliver Crystalclear, Quad HD 2560x1440 or 2560x1080 pixel images. Utilizing high performance panels with high density pixel count, enabled by high bandwidth sources, these new displays will make your images and graphics come alive. Whether you are demanding professional requiring extremely detailed information for CAD-CAM solutions, using 3D graphic applications or a financial wizard working on huge spreadsheets, Philips displays will give you Crystalclear images.

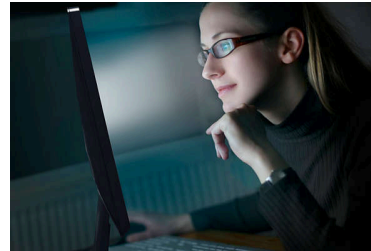
### 120Hz Fast refresh



For gaming and video performance, you demand display with lag free, ultra-smooth images. This Philips display redraws the screen image up-to

120 times per second, much faster than a standard display. A lower frame rate can make enemies appear to jump from spot to spot on the screen, making them difficult targets to hit. With 120Hz frame rate, you get those critical missing images on the screen which shows enemy movement in ultra-smooth motion so you can easily target them.

### SoftBlue Technology



SoftBlue LED technology, combined with the monitor's low blue light panel, is an effective solution to reducing the adverse health effects caused by high exposure to blue light. In this monitor's panel, the ratio of light is reduced by nearly 50 percent while the SoftBlue LED technology works simultaneously by reducing harmful blue light rays emitted from the screen. Not to mention, the SoftBlue LED technology is tested and certified by TUV Rheinland Eyesafe® for its effectiveness in reducing blue light emissions.

### Built-in stereo speakers



A pair of high quality stereo speakers built into a display device. It can be visible front firing, or invisible down firing, top firing, rear firing, etc depending on model and design.

### Flicker-free technology



Due to the way brightness is controlled on LED-backlit screens, some users experience flicker on their screen which causes eye fatigue. Philips Flicker-free Technology applies a new solution to regulate brightness and reduce flicker for more comfortable viewing.

### EasyRead mode



EasyRead mode for a paper-like reading experience

### TUV Rheinland Eyesafe - RPF® 40

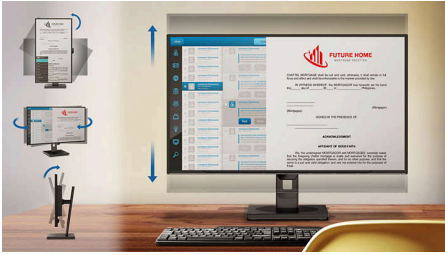


Philips display meets TUV Rheinland Eyesafe® standard to truly protect you from the long exposure to blue light. The always-on blue light filter not only helps reduce digital eye strain, but also guarantees color integrity.



## Highlights

### SmartErgoBase



The SmartErgoBase is a monitor base that delivers ergonomic display comfort and provides cable management. The base can swivel, tilt and rotate to various angles to ensure maximum comfort. The height adjustable stand guarantees the optimal viewing level, reducing the physical strains of a long workday, while cable management reduces cable clutter and keeps the workspace neat and professional.

### Smart Link Sync



Easily create a seamless multi-monitor workspace with Smart Link Sync, designed to automatically align display settings across daisy-chained monitors. Whether you're designing, presenting, or multitasking, enjoy consistent brightness and color without manual tweaks. Choose from OSD Sync or Light Sync modes (Low, Mid, or High) on the primary monitor to match your environment. For identical monitors, any mode ensures uniform visuals; for mixed models, Light Sync intelligently adjusts luminance for a balanced, professional look across screens.

### USB-C Docking with RJ45



Simplify all peripherals from monitor to PC using one-cable-docking USB Type-C connector, includes networking, high resolution video output from PC to monitor, and surfing on Internet without an additional network cable, even without LAN port on your notebook. RJ45 connection through USB-C offers a fast and secure connection when needed. Getting the fastest data speeds allows you to transfer data from a HDD to your PC faster than ever. Additionally, USB-C with power delivery can even enable you to power and charge your notebook from the monitor, eliminating the need for extra power cables.

### High speed data transfer

USB 3.2 high speed data transfer

# Business Monitor

LCD monitor with USB-C

27B2U4601/75

## Specifications

### Picture/Display

**Panel Size:** 27 inch / 68.5 cm  
**Aspect ratio:** 16:9  
**LCD panel type:** IPS technology  
**Backlight type:** W-LED system  
**Pixel pitch:** 0.2331 x 0.2331 mm  
**Brightness:** 350 cd/m<sup>2</sup>  
**Display colors:** 16.7M (True 8 bits)  
**Color gamut (typical):** NTSC 114%\*, sRGB 125%\*  
**Contrast ratio (typical):** 1500:1  
**SmartContrast:** 50,000,000:1  
**Viewing angle:** 178° (H) / 178° (V), @ C/R > 10  
**Picture enhancement:** SmartImage  
**Maximum resolution:**  
2560x1440@120Hz(HDMI/DP/USBC)\*  
**Effective viewing area:** 596.74(H)x335.66(V) mm  
**Scanning Frequency:** 30-230 KHz (H) / 48-120 Hz (V)  
**sRGB**  
**SoftBlue**  
**Flicker-free**  
**Pixel Density:** 109 PPI  
**Display Screen Coating:** Anti-Glare, 3H, Haze 25%  
**EasyRead**  
**Adaptive sync**  
**EyeSafe**  
**Smart Link Sync:** When used as a primary or secondary monitor\*  
**SmartResponse:** 4 ms (Gray to Gray)\*

### Connectivity

**Signal Input:** HDMI 2.0 x 1, DisplayPort 1.4 x 1, USB-C x 1 (upstream, DP Alt mode, Data, PD)  
**Sync Input:** Separate Sync, Sync on Green  
**Audio (In/Out):** Audio out  
**RJ45:** Ethernet LAN up to 1G\*  
**Signal Output:** DisplayPort out x 1  
**HDCP:** HDCP 1.4 (HDMI / DisplayPort / USB-C), HDCP 2.2 (HDMI / DisplayPort / USB-C)  
**HBR3:** HBR 3 (DisplayPort / USB-C)  
**USB Hub:** USB3.2, Gen2, 10G, upstream: 1x USB-C1 (Full), downstream: USB-A x3 (with x1 fast charge B.C 1.2), USB-C2 x1 (data, 15W)

### Power Delivery

**Max power delivery:** Up to 100W (5V/3A, 7V/3A, 9V/3A, 10V/3A, 12V/3A, 15V/3A, 20V/3.25A, 20V/4.8A)\*  
**Version:** USB PD version 3.0

### Convenience

**Built-in Speakers:** 2W x 2  
**Plug & Play Compatibility:** DDC/CI, Mac OS, sRGB, Windows 11 / 10  
**User convenience:** SmartImage, Input, Brightness, Menu, Power On/Off  
**OSD Languages:** Brazil Portuguese, Czech, Dutch, English, French, Finnish, German, Greek, Hungarian, Italian, Japanese, Korean, Portuguese, Polish, Russian, Simplified Chinese, Spanish, Swedish, Traditional Chinese, Turkish, Ukrainian  
**Other convenience:** Kensington lock, VESA mount (100x100mm)  
**Control software:** SmartControl

### Stand

**Height adjustment:** 150 mm  
**Pivot:** -/+90 degree  
**Swivel:** -/+180 degree  
**Tilt:** -5/30 degree

### Power

**ECO mode:** 13.8 W(typ.)  
**Power supply:** Built-in, 100-240VAC, 50-60Hz  
**Off mode:** 0.3 W (typ.)  
**On mode:** 19.17 W (typ.) (EnergyStar test method)  
**Standby mode:** 0.3 W (typ.)  
**Power LED indicator:** Operation - White, Standby mode- White (blinking)

### Dimensions

**Packaging in mm (WxHxD):** 730 x 445 x 139 mm  
**Product without stand (mm):** 614 x 371 x 66 mm  
**Product with stand(max height):** 614 x 543 x 235 mm

### Weight

**Product with packaging (kg):** 9.80 kg  
**Product with stand (kg):** 7.11 kg  
**Product without stand (kg):** 5.37 kg

### Operating conditions

**Altitude:** Operation: +12,000ft (3,658m), Non-operation: +40,000ft (12,192m)  
**Temperature range (operation):** 0°C to 40 °C  
**Relative humidity:** 20%-80 %  
**Temperature range (storage):** -20°C to 60 °C  
**MTBF (demonstrated):** 70,000 hrs (excluded backlight)

### Sustainability

**Environmental and energy:** PowerSensor, LightSensor, Energy Star, EPEAT\*, RoHS  
**Post consumer recycled plastic:** 85%+OBP 5%  
**Recyclable packaging material:** 100 %  
**Specific Substances:** Mercury free, PVC / BFR free housing

### Compliance and standards

**Regulatory Approvals:** CB, CE Mark, ETL, CEC, TUV/GS, TUV Ergo, TCO Certified, TCO Certified Edge, EAC, EAEU RoHS, MEPS, UKCA, EMF, FCC, ICES-003, TÜV Rheinland Low Blue Light (Hardware Solution), eyesafe® CERTIFIED 2.0

### Cabinet

**Finish:** Texture  
**Foot:** Silver  
**Front bezel:** Charcoal  
**Rear cover:** Charcoal

- \* "IPS" word mark / trademark and related patents on technologies belong to their respective owners.
- \* Response time value equal to SmartResponse
- \* Adobe RGB and DCI-P3 Coverage based on CIE1976, sRGB Area based on CIE1931, NTSC Area based on CIE1976.
- \* The power delivery of this display is up to 100 W (96 W in typical), the maximum power delivery will depend on your device.
- \* For Video transmission via USB-C, your Notebook/device must support USB-C DP Alt mode
- \* Activities such as screen sharing, on-line streaming video and audio over the Internet can impact your network performance. Your hardware, network bandwidth and its performance will determine overall audio and video quality.
- \* For USB-C power and charging function, your Notebook/device must support USB-C standard Power Delivery specifications. Please check with your Notebook user manual or manufacturer for more details.
- \* If your Ethernet connection seems slow, please enter OSD menu and select USB 3.0 or higher version which can support the LAN speed to 1G.
- \* When USB-C is set to High Resolution mode, the maximum supported resolution is 2560x1440@120Hz.
- \* When calculating energy costs saving from PowerSensor, both USB and Power delivery are excluded.
- \* EPEAT rating is valid only where Philips registers the product. Please visit <https://www.epeat.net/> for registration status in your country.
- \* For Smart Link Sync to function properly, all daisy-chained monitors must be compatible with Smart Link.
- \* The products and accessories listed on this leaflet may differ by country and region.
- \* The monitor may look different from feature images.

