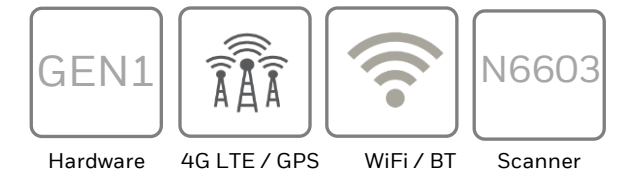


Dolphin CT60 Computer - Configuration Guide



- Included in the box:
- CT60 Mobile Computer
 - Battery
 - Hand strap
 - Tethered Stylus



CT60 Android - 4G WWAN - 4GB RAM/ 32GB Flash

CT60-L1N-BSC210A

CT60, Android 7.1.1, WWAN, 802.11 a/b/g/n/ac/r/k/mc, 1D/2D Imager SR(N6603), 4GB/32GB Memory, 13MP Camera, BT 5.0, NFC, Battery 4,040 mAh

CT60 Android- WiFi Only - 4GB RAM/ 32GB Flash

CT60-LON-BSC210A

CT60, Android 7.1.1, WLAN, 802.11 a/b/g/n/ac/r/k/mc, 1D/2D Imager SR(N6603), 4GB/32GB Memory, 13MP Camera, BT 5.0, NFC, Battery 4,040 mAh

CT60 Android - 4G WWAN - 3GB RAM/ 32GB Flash

CT60-L1N-ASC210A

CT60, Android 7.1.1, WWAN, 802.11 a/b/g/n/ac/r/k/mc, 1D/2D Imager SR(N6603), 3GB/32GB Memory, 13MP Camera, BT 5.0, NFC, Battery 4,040 mAh

CT60 Android- WiFi Only - 3GB RAM/ 32GB Flash

CT60-LON-ASC210A

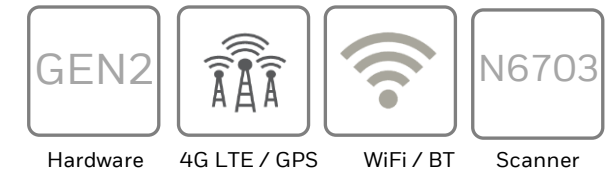
CT60, Android 7.1.1, WLAN, 802.11 a/b/g/n/ac/r/k/mc, 1D/2D Imager SR(N6603), 3GB/32GB Memory, 13MP Camera, BT 5.0, NFC, Battery 4,040 mAh

Honeywell Repair Services

SVCCT60-5FC3

CT60, PLUS, 5 Day Turnaround, 3 Year, Day One

Dolphin CT60 Computer - Configuration Guide



- Included in the box:
- CT60 Mobile Computer
 - Battery
 - Hand strap
 - Tethered Stylus



CT60 Android - 4G WWAN – 4GB RAM/ 32GB Flash

CT60-L1N-BRC210A CT60, Android 8.1, WWAN, 802.11 a/b/g/n/ac/r/k/mc, 1D/2D Imager SR(N6703), 4GB/32GB Memory, 13MP Camera, BT 5.0, NFC, Battery 4,040 mAh, warm swap

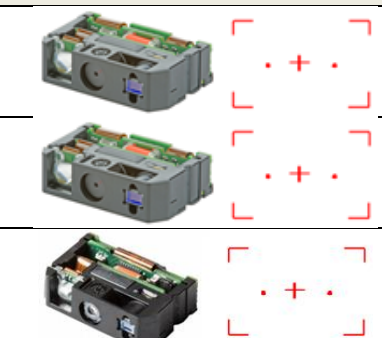
CT60 Android - 4G WWAN – 3GB RAM/ 32GB Flash

CT60-L1N-ARC210A CT60, Android 8.1, WWAN, 802.11 a/b/g/n/ac/r/k/mc, 1D/2D Imager SR(N6703), 3GB/32GB Memory, 13MP Camera, BT 5.0, NFC, Battery 4,040 mAh, warm swap

Honeywell Repair Services

SVCCT60-5FC3 CT60, PLUS, 5 Day Turnaround, 3 Year, Day One

Dolphin CT60 Configuration Map

Bluetooth/ WiFi	WWAN	NFC	—	Memory	Imager	Camera	Operating System	Battery	Options	Domain	Description	Notes
CT60-												
L											802.11 a/b/g/n/ac/r/k/mc + Bluetooth 5.0	IEEE 802.11 a/b/g/n/ac; Wi-Fi certified V5.0 Bluetooth and BLE Supported Bluetooth Profiles: HFP, PBAP, A2DP, AVRCP, OPP, SPP, GATT
	1										LTE (4G) GPS, UMTS/HSPA+ (3G) GSM/GPRS/EDGE	WWAN Radio (ATT/VZW/SPRINT/TMO/NA/EU) LTE (FDD) – Bands 1,2,3,4,5,7,8,12,13,17,19,20,25,26,28,29 LTE (TDD) – Bands 38,39,40,41 UMTS/HSPA+ (3G) – Bands 1, 2, 4, 5, 6, 8, 9, 19 GSM/GPRS/EDGE Quad-Band (850/900/1800/1900 MHz)
	0										No WWAN	
		N									Near Field Communication (NFC)	Integrated Near Field Communication
			—									
				A							3GB RAM/32GB Flash Memory	2.2 GHz Qualcomm Snapdragon™ 660 octa-core
				B							4GB RAM/32GB Flash Memory	2.2 GHz Qualcomm Snapdragon™ 660 octa-core
					D						1D/2D Imager (N6703 HD) – High Definition	
					R						1D/2D Imager (N6703 SR) – Standard Range	
					S						1D/2D Imager (N6603)	
						C					13MP Camera	13-megapixel color camera auto focus with flash (rear), 4K video with image stabilization, and advanced software features for enhanced exposure control
							1				Android (Non-GMS)	
							2				Android (GMS)	Google Mobile Services (GMS) certified – Play Store
								1			Standard Battery	Li-Ion, 3.6 V, 4090 mAh with integrated battery diagnostics
									0		No Option	
									1		Non-Incendive (NI) Certified / ATEX	Suitable for use in Division 2 locations Safety: cULus Listing – ISA/ANSI 12.12.01 Gases: Class I – Groups A, B, C, D Dusts: Class II – Groups F, G Fibers and Flyings: Class III *Max Ambient: 50°C (122°F) T6
										A	ANZ & Argentina	Argentina, Australia, New Zealand

Honeywell Repair Services

CT60 – Repair Services

For Best-In-Class Service

With Honeywell Repair Services, it’s easy to get the level of repair coverage and protection that makes the most sense for your business. And our repair services are now available in over 70 countries with global pricing and global standards of quality.

Choose from one of our new cost-effective Repair Service contract programs – Complete, Plus or Basic – to get the right amount of coverage and protection you need for your durable, rugged and ultra-rugged products. And for equipment not covered by a contract service plan, you can choose from our Non-Contract Repair Service offerings, which include flat-rate repairs, time-and-materials repairs and more.

Ensure business continuity, workflow performance and protection of your technology investments with Honeywell Repair Services.

Plus Repair Services

Protect your technology investment! With Honeywell’s 3 and 5 year Plus comprehensive repair services plan, you won’t incur any additional costs beyond the plan enrollment for service on covered devices and eligible accessories included with equipment sent to the depot for service. Eligible accessories include damaged styluses, battery-door covers, screen protectors, hand straps and clips.

Service Overview

- Features and benefits include:
 - Comprehensive coverage – including device replacement for rugged or stationary products
 - Day One multi-year pricing for lower annualized costs
 - Three years of locked-in service-price protection, with optional renewals
 - Options for 2-day and 5-day service levels
 - Cleaning and preventive maintenance
 - Telephone-based technical support
 - Convenient online Return Authorization requests and access to online service-history reports

Complete Repair Services

The only contract you will ever need! With Honeywell’s 3 and 5 year Complete comprehensive repair services plan, one contract covers it all – device, power management and accessories. Eligible accessories and power management for mobile computers include: batteries, docks, chargers, cradles, cables, damaged styluses, battery-door covers, screen protectors, hand straps and clips.

Service Overview

- Features and benefits include:
 - Comprehensive coverage – including device replacement for rugged or stationary products
 - Coverage for power management and select accessories
 - Day One multi-year pricing for lower annualized costs
 - Five years of locked-in service-price protection
 - Options for overnight and 2-day or 5-day service levels
 - Cleaning and preventive maintenance
 - Telephone-based technical support
 - Convenient online Return Authorization requests and access to online service-history reports

Part#	Description
SVCCT60-5FC3	CT60, PLUS, 5 Day Turnaround, 3 Year Day One
SVCCT60-5FC5	CT60, PLUS, 5 Day Turnaround, 5 Year, Day One
SVCCT60-2FC3	CT60, PLUS, 2 Day Turnaround, 3 Year, Day One
SVCCT60-2FC5	CT60, PLUS, 2 Day Turnaround, 5 Year, Day One

Part#	Description
SVCCT60-5PS3	CT60, COMPLETE, 5 Day Turnaround, 3 Year, Day One Includes Power Management Protection, Browser Maintenance, Battery Refresh (APAC Only)
SVCCT60-2PS5	CT60, COMPLETE, 2 Day Turnaround, 5 Year, Day One Includes Power Management Protection, Browser Maintenance, Battery Refresh

Honeywell Repair Services

CT60 – Repair Services

For Best-In-Class Service

CT60



Warranty Cover Against Product Defect

BASIC Service

Comprehensive Coverage:

- Accidental Damage
- Device Replacement
- Wear & Tear

Includes Replacement of:

- Hand Strap
- Screen Protector
- Stylus



PLUS Service

Complete Coverage

- Battery Replacement
- Coverage for Docks/ Chargers
- Software Maintenance for Client Pack (Enterprise TE + Browser)
- Sentinel Extended Service for Android Security Updates



Pistol Grip



Vehicle Dock



Snap-On Chargers



Battery
(3 Year – 1 replacement battery per CT60)
(5 Year – 2 replacement batteries per CT60)



Docks



Dock Power Supplies

COMPLETE Service

Part#	Description
SVCCT60-EXW2	CT60, BASIC, 10-15 Day Turnaround, 2 Years (1 Year Factory Warranty + 1 Year Extended)
SVCCT60-5FC3	CT60, PLUS, 5 Day Turnaround, 3 Year, Day One
SVCCT60-5PS3	CT60, COMPLETE, 5 Day Turnaround, 3 Year Day One, Includes Power Management Protection, Accessory Coverage and Software Maintenance for Client Pack.

Honeywell Repair Services

CT60 – Repair Services

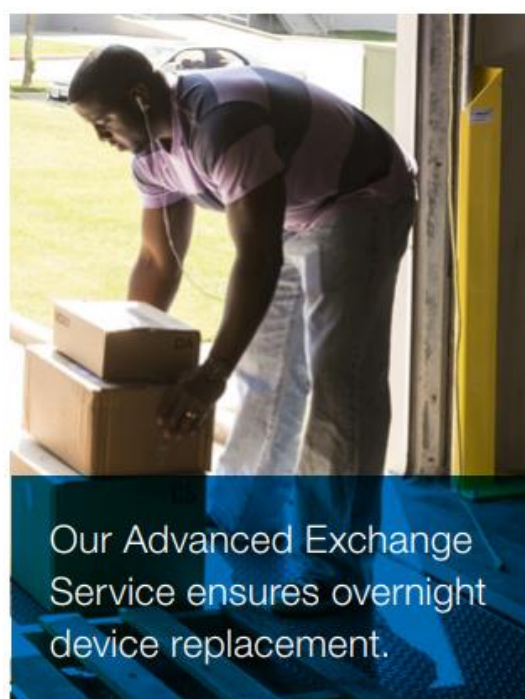
For Best-In-Class Service

Advanced Exchange Service: Your Equipment "On Demand"

For overnight replacement of your Honeywell device, upgrade to our Advanced Exchange Service.

- Customer-owned, Honeywell-managed inventory ready for overnight shipment when you need it.
- Ship the damaged device to us; we'll repair it and add it to your Honeywell managed inventory to replace the device we shipped.

Part Number	Description
SVCCT60-AEFC3	CT60, PLUS, Advanced Exchange, 3 Year, Day 1



Golden Image

Need the Honeywell Repair Centre to load your software after repair, the Golden Image can be loaded to fast track your devices.

- This is an additional offering which can be added to your Plus and Complete Service.
- Please contact your local Honeywell Representative for more information on this service.

Part Number	Description
SVCMOB-IMAGE3	Golden Image Service - load of customer image on units in repair, Adder to Comprehensive Service, 3 Year Term, 100 unit minimum, Contact Services Sales Manager for Pricing

SVCMOB-IMAGE5	Golden Image Service - load of customer image on units in repair, Adder to Comprehensive Service, 5 Year Term, 100 unit minimum, Contact Services Sales Manager for Pricing
---------------	---



Dolphin CT60 Software

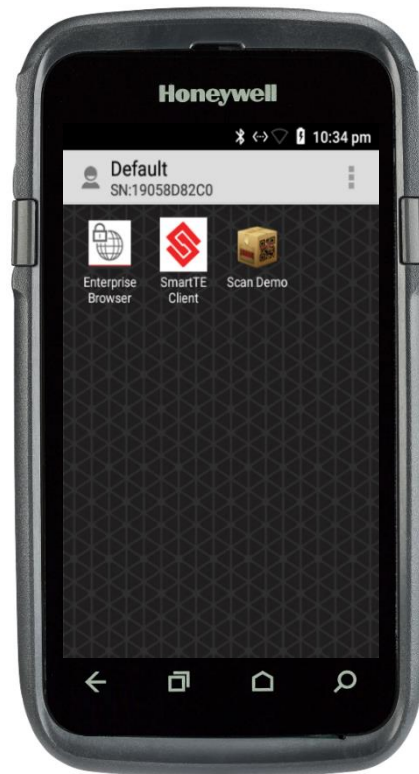
CT60 – Device Client Pack

Device Client Pack (DCP) includes first year maintenance. Add additional years of software maintenance for the applications below.

Device Client Pack



Launcher

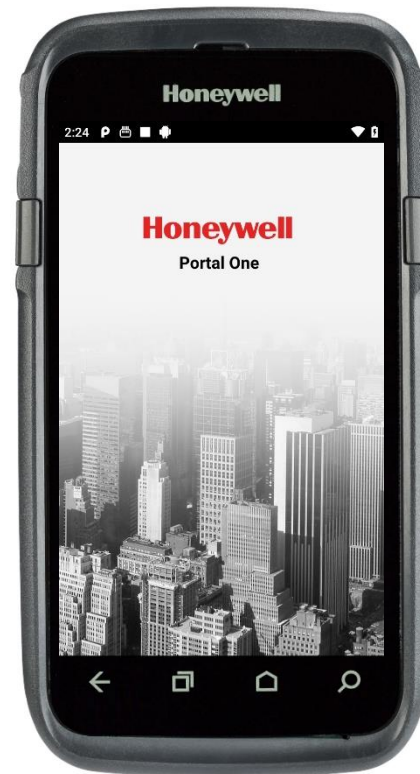


Launcher - gives the customer total control over which apps can be run on the device.

Part#	Description
DCP-001	Device Client Pack License (Launcher & Enterprise Browser)
DCP-SFT1	Device Client Pack - 1 Year Maintenance (Launcher & Enterprise Browser)
DCP-SFT3	Device Client Pack - 3 Year Maintenance (Launcher & Enterprise Browser)



Enterprise Browser



Enterprise Browser provides corporations the ability to run standard web applications from a controlled environment.



SmartTE Terminal Emulator



Terminal Emulator – Full featured SmartTE allows legacy green screen apps to be transformed to the look and feel of native apps. These clients are single session Honeywell TE Licensing. They can also utilize traditional single or multi-session StayLinked Licenses.

Part#	Description
SMARTTE-001	SMARTTE - SINGLE PATH W-1YR MAINT
SMARTTE-SFT3	SMARTTE - 3YR SW MAINTENANCE
SMARTTE-SFT5	SMARTTE - 5YR SW MAINTENANCE

Dolphin CT60 Scanning

Option 1 – Scan Handle

Use for Scan intensive applications



Part Number	Description
1 CT50-SCH	User installable scan handle for scan intensive applications. Easy on and Easy off to allow for recharging in CT60 desktop docks.

Dolphin CT60 Desktop Communications

Option 1 – Portable

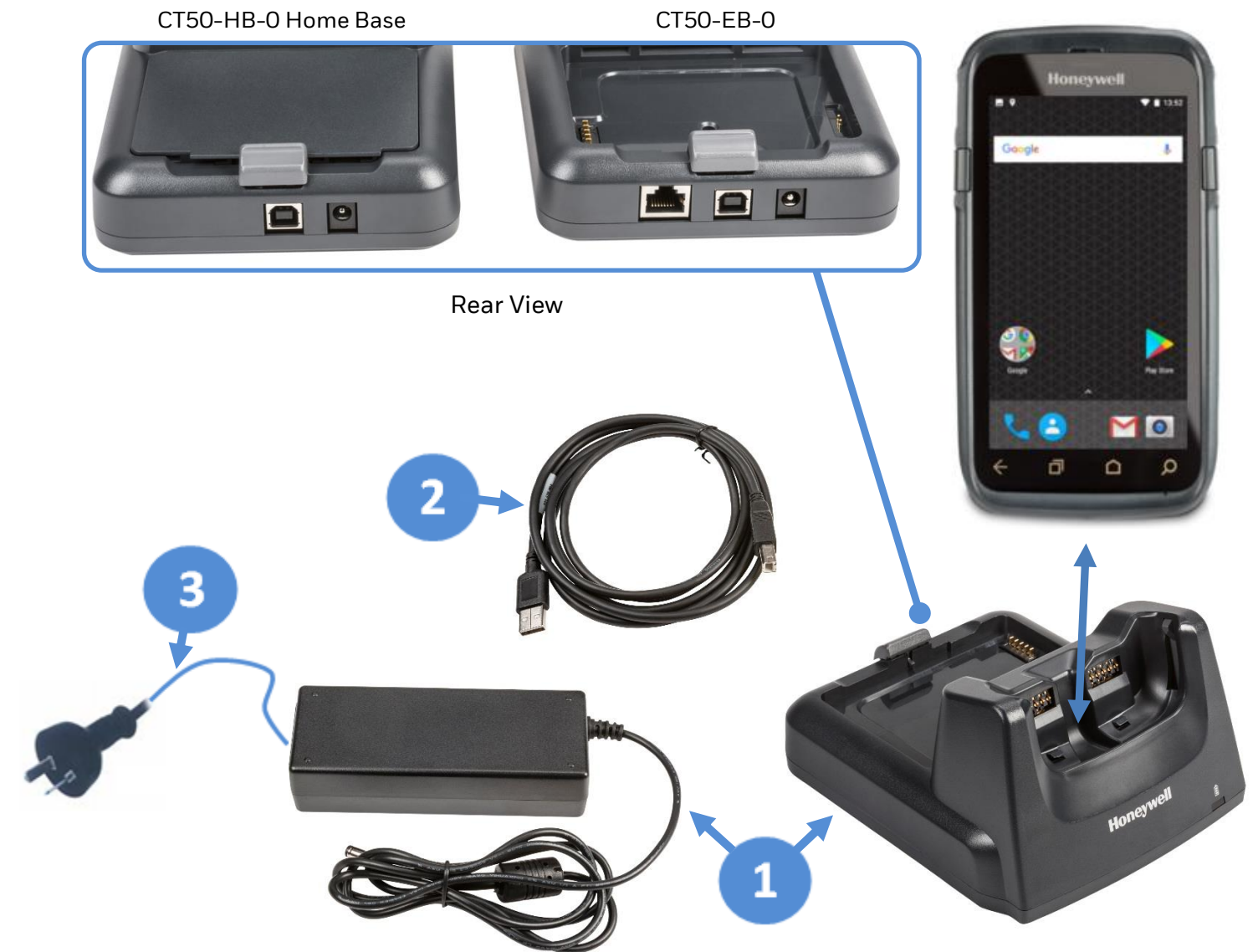
USB Communication OR Snap-On Charging



Part Number	Description
1 CT50-USB	Snap-on cup with Standard Type A connector.
2 213-029-001	Kit includes AC Power Adapter Kit (US, EU, UK, ANZ) & USB Cable

Option 2 – Fixed

USB and optional Ethernet Communication & Single Battery Charger



Part Number	Description
1 CT50-HB-0	HomeBase - Kit includes Dock & Power Supply, must order Power Cord separately
OR CT50-EB-0	eHomeBase – Ethernet Kit includes Dock & Power Supply, must order Power Cord separately
2 321-576-004	Cable Assembly - USB Type A to Type B
3 **	AC Power Cord – See Page 19 for Country Specific Power Cords

Dolphin CT60 Vehicle Install

Option 1 – Portable/ Sub Contractor Install

Simple Vehicle Charging, portable between vehicles



Part Number	Description
1 CT50-MC	Snap-on cup with Cigarette Lighter plug.

Option 2 – Portable/ Sub Contractor Install

Windscreen Suction Cup Mount, portable between vehicles.



Part Number	Description
1 CT50-MB-1	Vehicle Dock w/ hard wired 3-pin power cable and a standard USB Type A cable (Kit Includes: CT50-MC-Cable - Auto Adapter, V-Docks, 3S Circular, RoHS)
2 RAM-B-166-202U	Suction Cup Mount Kit

Honeywell Repair Services

SVCCT50ACC-5LC3 CT50 Accessories, Limited Comprehensive, 5 Day Turnaround, 3 Years

Dolphin CT60 Vehicle Install

Option 3 – Fixed Vehicle Install with Direct Connection to Vehicle Battery/ Fuse Block

Best used when the vehicle input voltage varies, 10- 30V.



	Part Number	Description
	1	CT50-MB-0 Vehicle Dock w/ hard wired 3-pin power cable and a standard USB Type A cable.
	2	226-109-003 72" (182.88 cm) Fuse block Power Cable with spade lugs and 3-pin connector
	OR	226-109-004 22" (55.8 cm) Fuse block Power Cable with spade lugs and 3-pin connector
	3	805-611-001 Mounting Kit, V-Dock RoHS
Optional	203-803-001	Vehicle Dock Fuse Block Power Kit RoHS (Provides connection to vehicle fuse block). Requires Power Cable (226-109-003 or 226-109-004).

Honeywell Repair Services

SVCCT50ACC-5LC3 CT50 Accessories, Limited Comprehensive, 5 Day Turnaround, 3 Years

Dolphin CT60 Vehicle Install

Option 4 – Fixed Vehicle Install with DC/DC Converter

Best used when the vehicle input voltage varies, 6-60V or 15-96V.



Part Number	Description
1 CT50-MB-0	Vehicle Dock w/ hard wired 3-pin power cable and a standard USB Type A cable.
2 203-808-001	DC/DC Converter Kit, <u>6-60V</u> DC, RoHS
OR 203-809-001	DC/DC Converter Kit, <u>15-96V</u> DC RoHS
3 805-611-001	Mounting Kit, V-Dock RoHS

Honeywell Repair Services

SVCCT50ACC-5LC3 CT50 Accessories, Limited Comprehensive, 5 Day Turnaround, 3 Years

Dolphin CT60 Vehicle Install

Option 5 – Fixed Vehicle Install with Thor DC/DC Converter

Best used when the vehicle input voltage varies, 9-60V or 50-96V.



Part Number	Description
1	CT50-MB-0 Vehicle Dock w/ hard wired 3-pin power cable and a standard USB Type A cable.
2	9000311PWRSPLY DC/DC Converter Kit, <u>9-60V</u> DC, RoHS (Requires 226-109-003 Wiring Harness)
OR	9000313PWRSPLY DC/DC Converter Kit, <u>50-150V</u> DC RoHS (Requires 226-109-003 Wiring Harness)
226-109-003	72" (182.88 cm) Fuse block Power Cable with spade lugs and 3-pin connector
3	805-611-001 Mounting Kit, V-Dock RoHS

Honeywell Repair Services

SVCCT50ACC-5LC3 CT50 Accessories, Limited Comprehensive, 5 Day Turnaround, 3 Years

Dolphin CT60 Charging and Communications

Option 1 – CT50/CT60 Quad Charger

Chargebase – Quad Dock Charge Only
 Netbase – Quad Dock with Ethernet



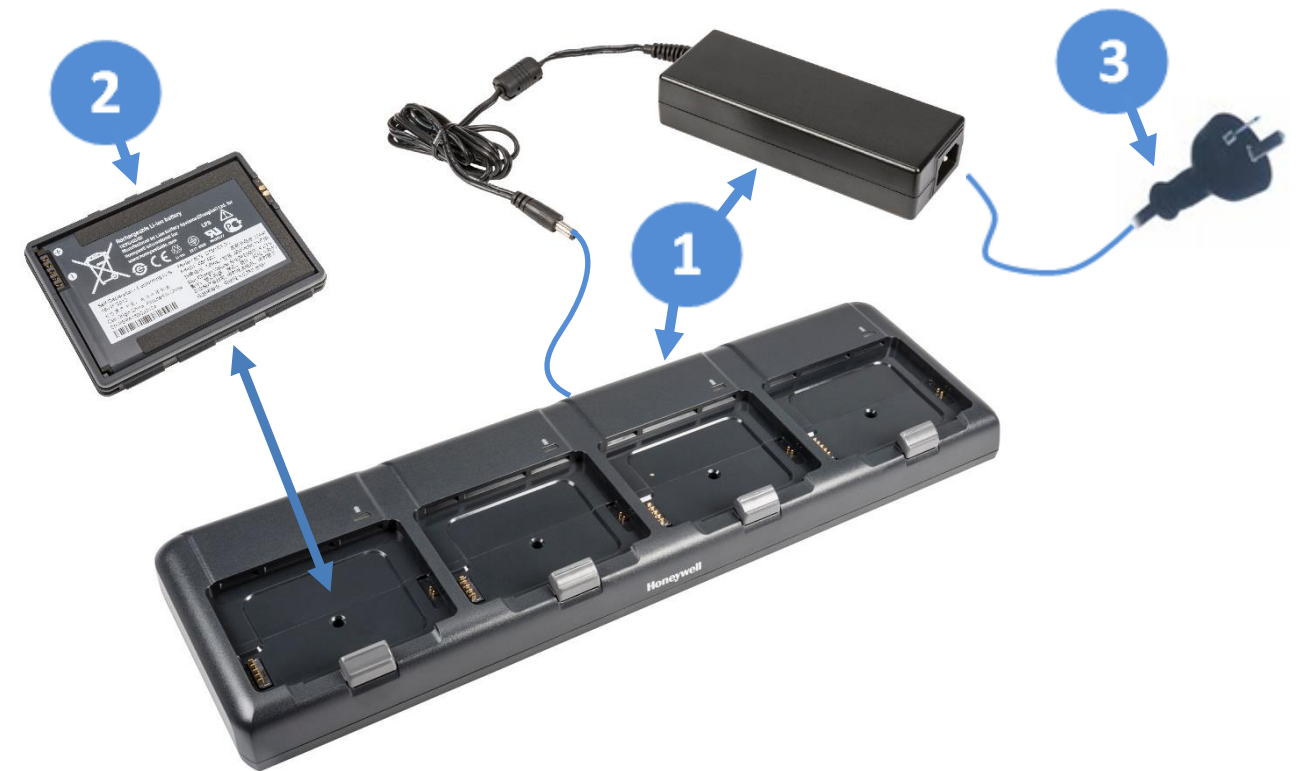
Part Number	Description
1	CT50-CB-0 Chargebase - Kit includes Dock and Power Supply
OR	CT50-NB-0 Netbase - For Ethernet comms and recharging upto 4 computers.
2	** AC Power Cord – See Page 19 for Country Specific Power Cords

Honeywell Repair Services

SVCCT50ACC-5LC3 CT50 Accessories, Limited Comprehensive, 5 Day Turnaround, 3 Years

Option 2 – Battery Charger

Charge up to 4 batteries simultaneously



Part Number	Description
1	CT50-QBC-0 Quad Battery Charger - Kit includes Dock and Power Supply
2	318-055-005 Replacement Battery for CT50
3	** AC Power Cord – See Page 19 for Country Specific Power Cords

Honeywell Repair Services

SVCCT50ACC-5LC3 CT50 Accessories, Limited Comprehensive, 5 Day Turnaround, 3 Years

Dolphin CT60 Charging and Communications

Option 3 – DX2 FlexDock 2-Bay

Charge Only – Dual Dock Charge Only
Ethernet – Dual Dock with Ethernet



Part Number	Description
1	852-918-002 FlexDock Base Dual Charge Only
OR	852-919-002 FlexDock Base Dual Ethernet
2	50135809-001-K FLEXDOCK CUP CT50/CT60 (Order 2 per DX2 FlexDock)
3	851-095-131 Universal Supply, 12V 48W Right Angle 2.5x5.5 Level IV
4	** AC Power Cord – See Page 19 for Country Specific Power Cords

Honeywell Repair Services

SVCFLEXDOCK-5FC3 FlexDock, All Versions, Full Comprehensive, 5 Day Turnaround, 3 Year Day One

Option 4 – DX4 FlexDock 4-Bay

Charge Only – Quad Dock Charge Only
Ethernet – Quad Dock with Ethernet



Part Number	Description
1	852-916-002 FlexDock Base Quad Charge Only
OR	852-917-002 FlexDock Base Quad Ethernet
2	50135809-001-K FLEXDOCK CUP CT50/CT60 (Order 4 per DX4 FlexDock)
3	851-064-427 Univ Power Supply, 12V 8A 4Skt Level VI RoHS
4	** AC Power Cord – See Page 19 for Country Specific Power Cords

Honeywell Repair Services

SVCFLEXDOCK-5FC3 FlexDock, All Versions, Full Comprehensive, 5 Day Turnaround, 3 Year Day One

Dolphin CT60 RFID

IH21 RFID Reader for CT60

Connect the IH21 to the CT60 via Bluetooth



IH21 Charging Cradle

	Part Number	Region	Description
	1	AUS	IH21 Bluetooth RFID Reader with e-Pop-Loq, UHF Antenna, Trigger Handle, Battery, Battery Cover, no imager, red and black. AU
	2		Cover,ePop-Loq CT50/CT60, IH21
	3		IH21 Docking Cradle with World traveler PSU and Mini USB Lead, red and black
Optional	IH21-QBC-1		4-Slot Battery Charger. Order power supply 851-812-001 & Power Cord separately
Optional	851-812-001		AC ADAPTER,12V/60W,2.5X5.5MM,LEVEL VI. Order AC Power Cord – See Page 19 for Country Specific Power Cords
Optional	318-060-001		Spare Battery for IH21 RFID reader

Honeywell Repair Services

SVCIH21-5FC3 IH21, PLUS, 5 Day Turnaround, 3 Year, Day One

Miscellaneous

CT60 Accessories



Part Number	Description
213-049-001	CT50 HAND STRAP, pack of 3



Part Number	Description
213-049-003	HAND STRAP, ADJUSTABLE, CT50, PACK OF 3



Part Number	Description
50121666-001	Power Adapter,12V 3A, No Power Cord, Compatible with CT50/CT60 Homebase / eHomebase / Quad Battery Charger



Part Number	Description
213-048-001	Pack of five CT50 replacement styluses.



Part Number	Description
346-087-001	SCREEN PROTECTOR, CT50/CT60



Part Number	Description
50121667-001	Power Adapter,12V 7A, No Power Cord, CT50/CT60 Quad Chargebase/Quad Netbase

Miscellaneous

CT60 Accessories



Part Number

Description

CT50-CC-12

CHARGING CABINET FOR CT60 and CT50 with space to house 12 Computers and 12 Spare Batteries.

Quad battery chargers (CT50-QBC-0) and Quad ChargeBase (CT50-CB-0) or NetBase (CT50-NB-0) must be ordered separately.



Front



Rear



Part Number

Description

825-238-001

CT50/CT60 Holster



Part Number

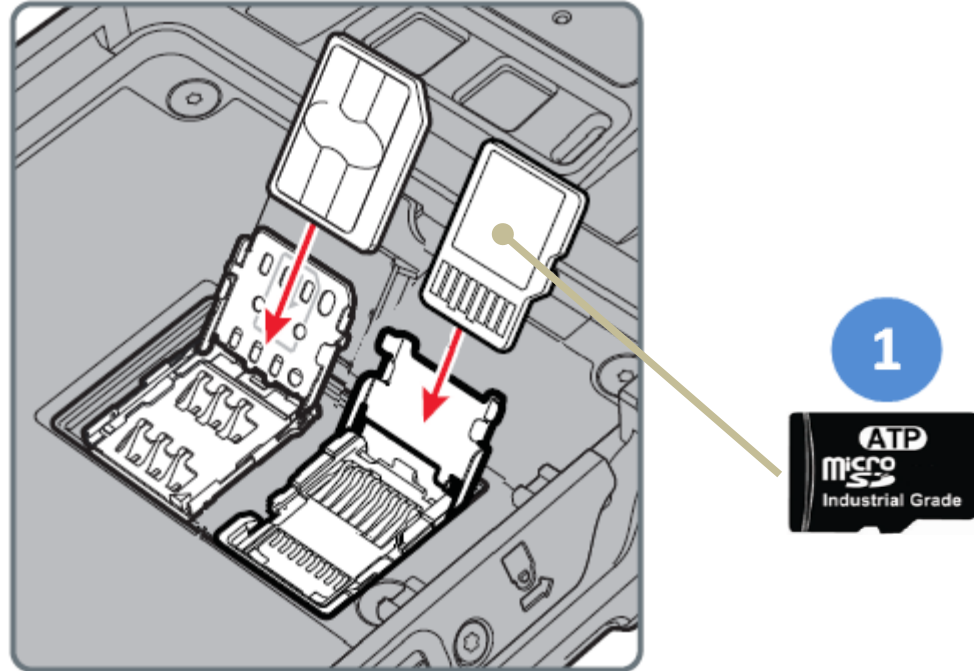
Description

825-237-001

POUCH, CT50/CT60

Miscellaneous

Honeywell Recommended – ATP Industrial Grade Micro SD Cards



Part Number	Description
1 856-065-004	MICRO-SD CARD, <u>1GB</u> , AF1GUDI, ROHS
OR 856-065-005	MICRO-SD CARD, <u>2GB</u> , AF2GUDI, ROHS
OR 856-065-006	MICRO-SD CARD, <u>4GB</u> , AF4GUDI, ROHS
OR 856-065-007	MICRO-SD CARD, <u>8GB</u> , AF8GUDI, RoHS

Why ATP Industrial Grade SD?

ATP's SIP (System-In-Packaging) manufacturing process encapsulates all exposed components and points of failure to ensure the products are fully waterproof, shockproof, and ESD (Electro-Static Discharge) proof. ATP Industrial Grade SD/SDHC Cards can withstand at least an operating/storage temperature range of at least -40 to 85 degrees Celsius. In addition to this temperature range, the cards are completely waterproof, dustproof, and ESD (Electro-Static Discharge) proof. All ATP Industrial Grade SD/SDHC cards are produced under a stringent RoHS and Green Package compliant manufacturing process to guarantee a consistent high level of build quality and performance. ATP Industrial SD cards deliver outstanding performance with read speed (seq) up to 18MB/sec and write speed (seq) up to 16MB/sec. All ATP Industrial Grade CF, SD, USB drives, and SSDs are constructed using best-in-class SLC(Single-Level Cell) components with enhanced Error Correction Code(ECC) functions and wear levelling algorithms. This results in MTBF ratings over 2 million hours and the highest write cycle lifetimes in the industry.

AC Cords

Part Number	Description
50117501-001	AC Power Cord, Australia
19-19807	AC Power Cord, China
9000091CABLE	AC Power Cord, Denmark
77900508E	AC Power Cord, Europe
50127245-001	AC Power Cord, India
9000092CABLE	AC Power Cord, Italy
321-500-002	AC Power Cord, Japan
9000093CABLE	AC Power Cord, Switzerland
77900507E	AC Power Cord, United Kingdom
19-19726	AC Power Cord, United States

Disclaimer

Honeywell International Inc. (“HII”) reserves the right to make changes in specification and other information contained in this document without prior notice, and the reader should in all cases consult HII to determine whether any such changes have been made. The information in this publication does not represent a commitment on the part of HII.

HII shall not be liable for technical or editorial errors or omissions contained herein; nor for incidental or consequential damages resulting the furnishing, performance, or use of this material.

This document contains proprietary information that is protected by copyright. All rights are reserved. No part of this document may be photocopied, reproduced, or translated into another language with-out prior written consent of HII.

Web Address: www.honeywellaidc.com

The Bluetooth trademarks are owned by Bluetooth SIG, Inc., U.S.A and licensed to Honeywell.

Other product names mentioned in the manual may be trademarks of registered trademarks of their respective companies and are the property of their respective owners.

© 2019 Honeywell International Inc. All rights reserved.