

LD-9043W



Bigger Screen Bigger Possibility

Use it as a 2nd screen or a digital signage,
transaction details and marketing campaign message are
beautifully delivered!



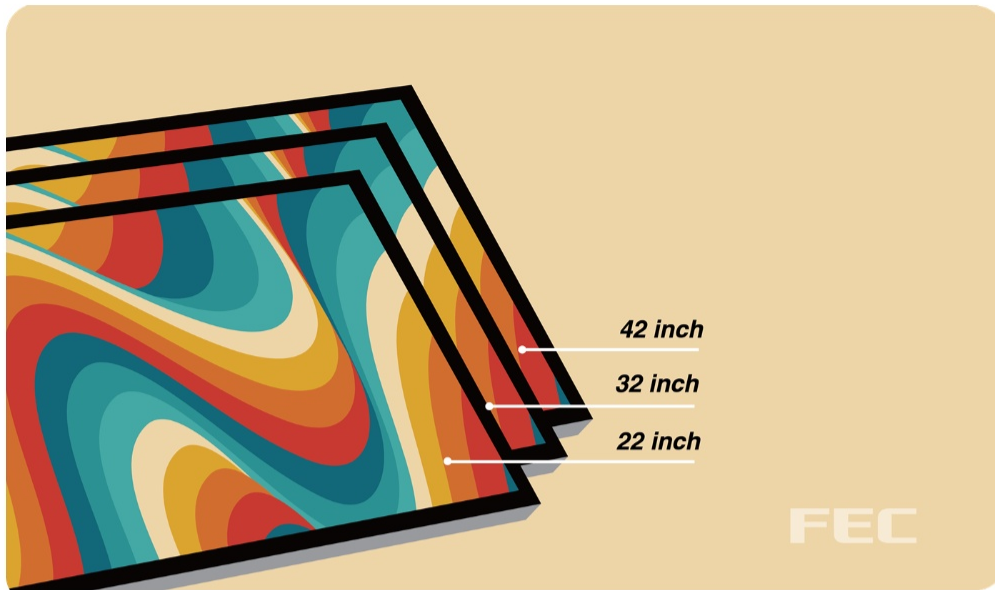
MONITOR Series

Bigger Screen Bigger Possibility.



01/ Slim Border Enhances

Overall Aesthetics!

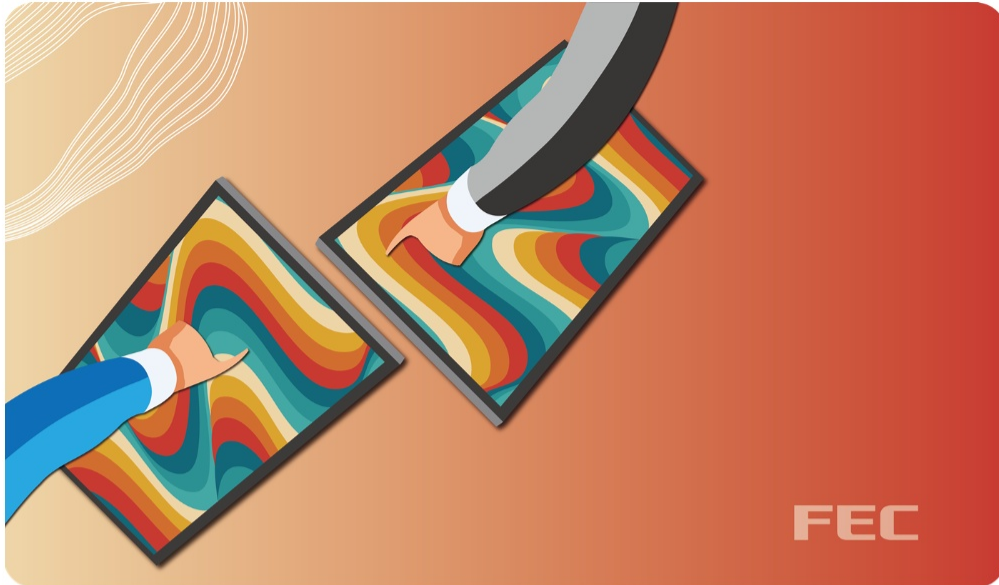


02/ Flexibility

Large Screen helps kitchen system run smoothly.

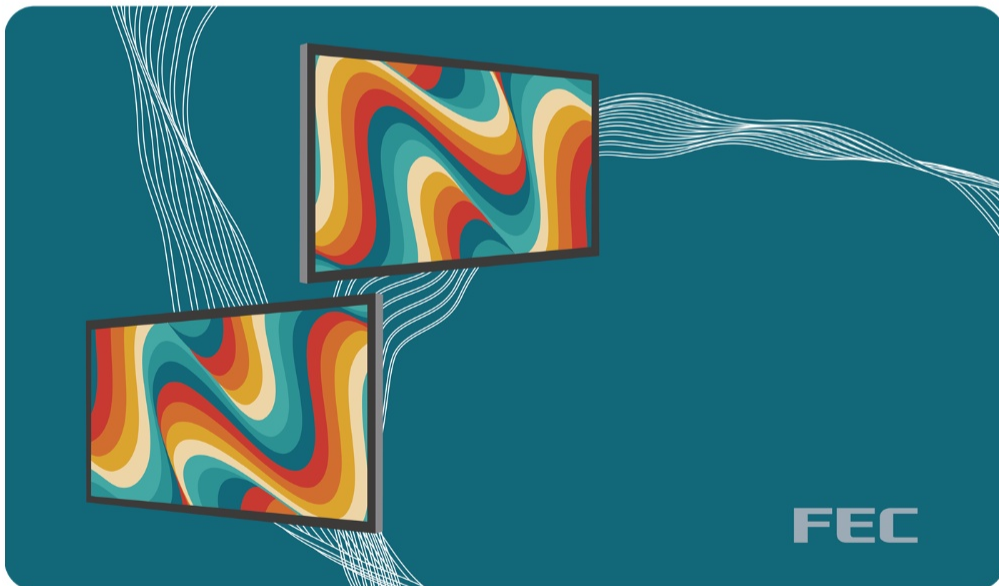


03/ Friendly Touch Panel



04/ Connectivity?

All You Needs!



05/ Where You Want! Where You MOUNT!



06/ Multiple Solutions

22", 32", or 42" The Best Choice!



Specifications



Display

- 42.5" TFT, 1920 x 1080



Touch

- True-Flat PCAP
- Optional:
 - Hovering Touch (Support additional 3mm max glass)
 - AG Coating



Brightness

- 500 nits



MTBF

- 50K Hours



Speaker

- None



Power

- 12V/150W External Power Adapter



Mounting

- Panel Mount
- Rear Mount
- VESA 400 x 400 mm



Certification

- FCC / CE Class B



Appearance

- Black / Metal SGCC



Temperature

- Operation: -5°C ~ 45°C (23°F ~ 113°F)
- Storage: -20°C ~ 60°C (-4°F ~ 140°F)



Dimensions (W x H x D)

- Product: 983.18 x 571.42 x 79 mm
- Carton: 1060 x 692 x 182 mm



Weight

- Display Only (Net): 21 Kg
- Display Only (Gross): 25 Kg



Port

- 1 x HDMI
- 1 x VGA
- 1 x USB 2.0 Type B
- 1 x DC-in 12V
- 1 x RJ11



Optional

- External OSD Keypad