

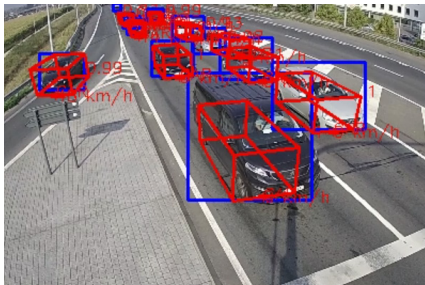


TRAFICAM AI™

AI-Powered HD Traffic Sensor

Designed to reliably detect and classify road users, the TraftiCam AI is an intelligent HD visible sensor for traffic monitoring in complex urban environments. Featuring a low-light HD visible camera and AI algorithms built on 25+ years of traffic detection, TraftiCam AI offers detailed vision and data collection for safer, more efficient cities. Capable of tracking multiple objects in any lighting or weather conditions; therefore, thermal is specifically used for safety-critical applications. The advanced edge-based AI technology effectively controls intersections and gathers detailed traffic data allowing you to make better city planning decisions.

DETECTION BASED ON AI
EFFECTIVE SIGNAL CONTROL
HIGH RESOLUTION DATA
TRAFFIC PREDICTION
WI-FI BASED TRAVEL TIME MONITORING
EASY-TO-INSTALL



PRECISE DETECTION AND CONTROL

Edge-based AI and Full HD imaging offer advanced intersection control that outperforms other signal control technologies

- Low light visual HD camera provides reliable vehicle detection at night and in challenging weather conditions
- Detect the position, speed and heading of vehicles in any direction
- Directly integrate with traffic controllers through accurate virtual loop configuration and dry contacts

FUTUREPROOF TRAFFIC INSIGHT

TraftiCam AI captures advanced and high-resolution traffic data for better-informed city planning decisions

- Automatically detect and classify road users and vehicle types into a wide range of subcategories
- Gather valuable data, including vehicle trajectories throughout intersections
- Provides real-time integration over APIs for adaptive and predictive traffic systems
- Provides information about the Situational Awareness

COMPREHENSIVE REPORTING

Generate automated reports with Acyclica to identify bottlenecks

- Determine the turning movement count per vehicle class at intersections throughout the day
- Measure travel & delay time between intersections *1
- Streamlined data visualization creates easy-to-read, compelling reasoning for city planning adjustments

For technical or sales support, please visit:
www.flir.com/about/general-inquiries

This product is subject to United States export regulations and may require US authorization prior to export, reexport, or transfer to non-US persons or parties. Diversion contrary to US law is prohibited.

For assistance with confirming the Jurisdiction & Classification of Teledyne FLIR, LLC products, please contact exportquestions@flir.com. ©2024 Teledyne FLIR, LLC. All rights reserved.

Revised March 25, 2024
Trafticam-AI-Datasheet-LTR-24-0164-ITS



SPECIFICATIONS

System Overview				
Functionalities	Conditional vehicle presence for each class Traffic data & flow monitoring Turning Movement Count Queue Occupancy Wrong way drivers PSH (Position, Speed & Heading) - optional API License ETA (Estimated Time of Arrival)			
Services	FLIR VSO data - optional Acyclica license Wi-Fi Travel Time analytics - optional Acyclica license*			
Configuration	Local/remote web page setup via PoE, Wi-Fi* or BPL			
Imaging & Optical				
Type	CMOS Type 1/2.8 color High Dynamic Range			
Resolution	Full HD (1920 × 1080)			
Frame Rate	25 fps			
Compression	H.264, MJPEG, H.265			
Streaming Video	RTSP			
Product Types				
	Part Number (Wi-Fi)	Part Number (Non Wi-Fi)	Focal Distance	Detection Distance for Vehicle Presence
TrafiCam AI - Wide	10-7710	10-7711	2.8 mm	0 - 75 m / 0 - 250 ft
TrafiCam AI - Narrow	10-7715	10-7716	8.0 mm	75 - 150 m / 250 - 500 ft
Mechanical				
Material	Aluminum housing with integrated polycarbonate sunshield			
Dimensions (incl. mounting bracket)	Vertically mounted: 45 cm × 16 cm × 12 cm / 9.8 in × 6.3 in × 4.7 in Horizontally mounted: 41 cm × 18 cm × 12 cm / 16.2 in × 7.1 in × 4.7 in			
Electrical				
Input power	24-42 VAC / 24-48 VDC			
Power consumption	Avg 9.5 W / Peak 14 W			
Communication				
Output contacts	<u>ROW</u> - 1 N/O and 1 N/C dry contact direct - 16 N/C dry contacts via TI BPL3 interface		<u>USA</u> - Hard wired: 4 N/C onboard + maximum 5x N/C via 4I/O USB expansion boards (maximum 24 outputs total) - SDLC: BIU - 64 or SUJ - 128	
PoE	PoE mode A for configuration, video streaming and data communication			
BPL	80 Mbps Broadband over Powerline communication via TI BPL3 (EDGE) interface			
Wi-Fi	IEEE 802.11 type b.g.n. EIRP < 100 mW*			
Environmental				
Shock & Vibration	NEMA TS2 specs			
Materials	All weatherproof UV resistant			
IP Rating	IP 67			
Temperature Range	-34°C to 74°C			
Regulatory				
FCC / EU Directives	FCC part 15 class A, EMC 2014/30/EU RoHS 2011/65/EU, LVD 2014/35/EU			

Specifications are subject to change without notice. For the most up-to-date specs, go to www.teledyneflir.com

*Only Wi-Fi version

For technical or sales support, please visit:
www.flir.com/about/general-inquiries

This product is subject to United States export regulations and may require US authorization prior to export, reexport, or transfer to non-US persons or parties. Diversion contrary to US law is prohibited.

For assistance with confirming the Jurisdiction & Classification of Teledyne FLIR, LLC products, please contact exportquestions@flir.com. ©2024 Teledyne FLIR, LLC. All rights reserved.

Revised March 25, 2024
Traficam-AI-Datasheet-LTR-24-0164-ITS